



European Society of Regional Anaesthesia **HELLAS**

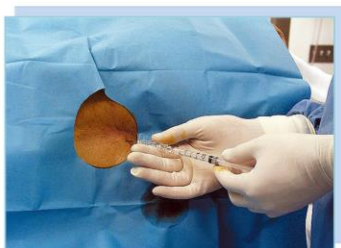
<http://www.esrahellas.gr>

Annual Regional Anaesthesia (RA) Hands – On Clinical Workshops

9th CYCLE, 2016 – 2017

Part I: 25 – 27 November 2016

Part II: 27 – 29 January 2017



INFO

ESRA Hellas Workshops (Part I & II) are recognized by **EDRA Diploma Board** as a prerequisite for the participation in EDRA Diploma Examination (Part I & Part II).

They are accredited with **24 CME Credits** by the **Panhellenic Medical Association** and are recognized by the **National Drug Organization (EOF)**.

Organization → ESRA Hellas

<http://www.esrahellas.gr>

INFORMATION – PREREGISTRATIONS

ESRA Hellas Secretariat

Mrs Eva Vlamopoulou

Anaesthesiologists Office

Aretaieion University Hospital

Athens, GREECE

Monday – Friday: 09.00 – 14.00

Telephone & Fax: +30 210 7286169

Cell Phone: +30 6984506866

Email: info@esrahellas.gr



European Society of Regional Anaesthesia HELLAS

<http://www.esrahellas.gr>

Tel & Fax: +30 210 7286169
Cell Phone: +30 6984 506866
Email: anais@aretaieio.uoa.gr
eargyra@med.uoa.gr

Annual Regional Anaesthesia Hands – On Clinical Workshop

Organization: ESRA Hellas Directory Board

9th Cycle: 2016 – 2017

- Accreditation with 24 CME Credits (Part I and II) by Panhellenic Medical Association
- Recognized as one of the Prerequisites for EDRA Diploma Exams
- Recognized by the Hellenic National Drug Organization (EOF)

PART II

27 – 29 January 2017, Aretaieion University Hospital, Athens, Greece

Friday 27.01.2017

15.00 – 15.30	Venue – Registrations Small Auditorium (Lecture Hall), Aretaieion University Hospital, Athens, Greece	
	LECTURES	
15.30 – 16.00	Applied Statistics in Regional Anaesthesia	K. Theodoraki
16.00 – 16.30	Regional Anaesthesia in Obstetrics	I. Siafaka
16.30 – 17.00	Regional Anaesthesia in Cardiovascular Patients: Interactive Discussion of Clinical Cases	A. Bairaktari
17.00 – 17.30	Regional anaesthesia / Analgesia at emergency Room (ER): Interactive Discussion of Clinical Cases	E. Chrona
17.30 – 18.00	Coffee Break	
18.00 – 18.30	Regional Anaesthesia and Anticoagulation	G. Kritharidou
18.30 – 19.00	Neurological Complications of Peripheral Nerve Blocks	A. Douma
19.00 – 19.30	Regional Anaesthesia in the Elderly Population	Y. Gurkan

Saturday 28.01.2017

08.45 – 09.00	Venue – Small Auditorium Aretaieion University Hospital – All Groups			
09.00 – 09.30	Lecture: Auditorium – All Groups Anatomy of Lower Limbs Nerves & Plexuses			Y. Gurkan
09.30 – 10.50	CLINICAL WORKSHOP I: Workstations and Groups Lower Limbs Nerve Blocks (Lumbar Plexus)			
Instructors	Y. Gurkan	A. Douma	E. Antonopoulou	M. Varveri
	Identification with Ultrasounds (US)		Clinical Demonstration, Neurostimulation (N/S)	
Workstations Clinical Practice on Live Model (40 min/station)	Workstation 1 Blockade of Lumbar Plexus, Fascia Iliaca, Femoral Nerve, Obturator Nerve & Adductor Canal	Workstation 2 Blockade of Saphenous Nerve and Lower Limb Peripheral Nerves	Workstation 3 Blockade of Fascia Iliaca, Femoral Nerve, Obturator Nerve and Saphenous Nerve	Workstation 4 Blockade of Saphenous Nerve and Lower Limb Peripheral Nerves
09.30 – 10.10	A	B	C	D
10.10 – 10.50	B	C	D	A
10.50 – 11.15	Coffee Break			
11.15 – 12.35	CLINICAL WORKSHOP I: Workstations and Groups Lower Limb Nerve Blocks (Lumbar Plexus) – Continued			
11.15 – 11.55	C	D	A	B
11.55 – 12.35	D	A	B	C
12.35 – 13.55	CLINICAL WORKSHOP II: Workstations and Groups Lower Limb Nerve Blocks (Sacral – Lumbosacral Plexus)			
Instructors	Y. Gurkan US	A. Douma US	E. Antonopoulou Landmarks – N/S	A. Andreou & A. Rantis Landmarks – N/S
Workstations Clinical Practice on Live Model (40 min/station)	Workstation 1 Sciatic Nerve Block (classical & subgluteal approach, other approaches)	Workstation 2 Popliteal Nerve Block & Lower Limb Peripheral Nerves Block	Workstation 3 Sciatic Nerve Block (classical & subgluteal approach, other approaches) & Popliteal Nerve Block	Workstation 4 Lumbar Plexus & Psoas Compartment Block
12.35 – 13.15	A	B	C	D
13.15 – 13.55	B	C	D	A
13.55 – 14.30	Lunch Break			
14.30 – 15.50	CLINICAL WORKSHOP II: Workstations & Groups Lower Limb Nerve Blocks (Sacral – Lumbosacral Plexus) – Continued			
14.30 – 15.10	C	D	A	B
15.10 – 15.50	D	A	B	C
16.00 – 17.00	CLINICAL WORKSHOP III TAP Block – Rectus Sheath Block		CLINICAL WORKSHOP IV Intravenous Regional Anaesthesia (IVRA)	
Instructors	M. Stamellos	P. Papacharalambous	Ch. Karanastassi	N. Fyrfiris
	Workstation 1 US Identification	Workstation 2 US Identification	Workstation 3 Clinical Demonstration Block Technique	Workstation 4 Clinical Demonstration Τεχνική Block
16.00 – 16.30	A	B	Γ	Δ
16.30 – 17.00	Γ	Δ	A	B

Sunday 29.01.2017

08.45 – 09.00	Venue – Small Auditorium, Aretaieion University Hospital, Athens – All Groups			
09.00 – 11.00	CLINICAL WORKSHOP V – Auditorium (All Groups) Local Anaesthetics Toxicity (LAST): Simulation of Crisis Coordination: E. Argyra Instructors: K. Theodoraki, E. Moka, A. Tsaroucha			
09.00 – 09.25	Briefing		K. Theodoraki	
09.25 – 10.35	Clinical Scenaria		2 Clinical Scenaria All Instructors / Televoting	
10.35 – 11.00	Debriefing – Questions & Comments		E. Moka	
11.00 – 11.30	Coffee Break			
11.30 – 12.00	LECTURE: Auditorium – All Groups Caudal Block		A. Karafotia	
12.00 – 13.30	CLINICAL WORKSHOP VI Hands – On Practice: Peripheral Nerve Blocks in Children Coordination: P. Mammi			
12.00 – 13.30	Clinical Practice on Paediatric Live Models with Ultrasound Application			
Instructors	E. Garini, E. Gliatis, G. Noutsos, D. Zacharopoulos			
Workstations Clinical Practice on Paediatric Live Models 45min/station	Workstation 1 Upper Limb Peripheral Nerve Blocks	Workstation 2 Upper Limb Peripheral Nerve Blocks	Workstation 3 Trunk & Lower Limb Peripheral Nerve Blocks	Workstation 4 Trunk & Lower Limb Peripheral Nerve Blocks
12.00 – 12.45	A	B	C	D
12.45 – 13.30	C	D	A	B
13.30 – 14.30	Self – Examination			